

UPCOMING AUCTION

• **TIMED ONLINE BIDDING** •

AS AUTHORIZED BY THE RECEIVER JAMES WILLIAMS & ASSOCIATES INC.

BIDDING ENDS OVER TWO DAYS

TUES. MAY 29TH & 30TH

10:30AM (EST) - SHARP

PREVIEW: MAY 25TH & 28TH, - 8:30 A.M. TO 4 P.M.

LOCATION: 7245 PACIFIC CIRCLE, MISSISSAUGA, ON, L5T 1V1



**Floridus
Designs**

**OVER
410
SECTIONS**



Triple-A 20', 10' & 6' uprights x 42"D Industrial Pallet Racking c/w Mesh Decking



Crown 30SP42TT Order Picker

**OVER
400
CROSSBEAMS**



Large Qty of Triple-A 8' Crossbeams



Fox FPS-150 Pallet Wrapper



Wanzl Flat Deck Shopping Carts

**40
CARTS**



Flat Deck & 2-Tier Warehouse Carts

**OVER
\$1,950,000
OF INVENTORY**



Huge Quantity of Everlasting Botanicals, Home & Garden Planters, Pots, & Accessories, Holiday Decor & More



View of Warehouse

VISIT OUR WEBSITE FOR A COMPLETE LISTING

**VIEW A PARTIAL LISTING &
THE PHOTO CATALOG ONLINE NOW
WWW.DANBURYGLOBAL.COM**

**NEED ADDITIONAL INFO
CALL US - (416) 630-5241
Jon Ordon Ext. 245
or Don Lee - Ext. 226**

BID ONLINE THROUGH
BidSpotter.com



AUCTIONEERS • APPRAISERS • LIQUIDATORS
Visit our Website at www.DanburyGlobal.com for further information

37 Kodiak Crescent, Unit 7, Toronto, ON, M3J 3E5 • Call (416) 630-5241 or 1-800-263-1469 • Fax: (416) 630-6260

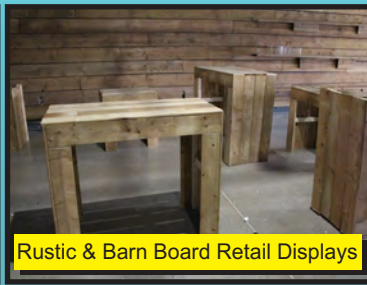
PRINTED IN CANADA



Motorola Mobile Computers



Dell Desktop Computers & Monitors



Rustic & Barn Board Retail Displays

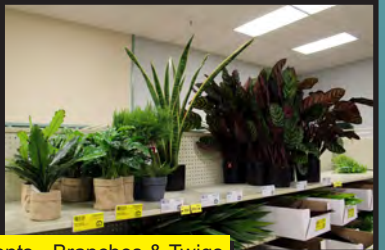


Huge Qty of Rolling Retail Displays

• AUCTION HIGHLIGHTS •

PALLET RACKING & SHELVING: (180) Sections Triple-A pallet racking approx. 18' x 16' x 8' x 42" w/ 10 & 6 Stringers / section • (36) Sections Triple-A pallet racking approx. 9' x 8' x 42" w/ (2, 4, & 6) Stringers / section • (171) Sections Triple-A pallet racking approx. 6' x 8' x 42" w/ (2) Stringers / section • Approx. (1,900) pieces 42" mesh decking • Approx. (400) Triple-A spare cross beams • **ROLLING STOCK:** Skyjack SJIII-3226 electric scissor lift w/ 26' Max platform height, 500lbs cap • Crown 30SP42TT-S 3,000lbs cap electric order picker w/ 240" lift, 2-stage mast, 42" forks, s/n H-16668 c/w charger • 2003 International 4300 DT466 straight truck VIN 1HTMMAAP73H57692 • **PACKAGING & WAREHOUSE EQUIPMENT • RETAIL DISPLAYS:** Fox FPS-150 pallet wrapper w/ ramp • Arctic ARC-616HS table top strapper • (2) Arctic table top semi-auto strappers • Qty of packing supplies c/o: cardboard, shrink wrap, tape, labels, etc. • Karcher HDS 750 Heavy Duty Pressure Washer • (19) Wanzl wire mesh & flat deck shopping carts • (18) Assorted flat deck & 2-tier warehouse carts • (4) pallet jacks • (3) Rolling warehouse ladders • Large qty of rolling retail displays • Asstd barn board, rustic displays & barn board tables • Retail displays, Gondola shelving, displays • **ELECTRONICS & OFFICE FURNITURE:** (5) Motorola Mobile Computers • (8) Symbol RF scanners • Toshiba e-Studio 3505AC Photocopier • Dell desktops, servers, & monitors • Lenovo laptop & desktop computers • Assorted workstation furniture, office suites, tables, reception station, & filing cabinets • **HOME & GARDEN:** Fiberstone Planters & Urns – Fiberglass Plants, Urns & Pedestals – Galvanized Metal Planters – Terra Collection – Fine Glazed Ceramic – Garden Accents – Biodegradable Pots – Vintage Collectione – Stone Lite – Lightweight Concrete Pots – Terrazzo Lamps – Poly Rattan – Premium Planters – Polystone Planters – Glass Vases – Plastic Pots – Fiberclay Planters – Fincontone Planters – Baskets • **EVERLASTING BOTANICALS:** Floral Pre-Made Arrangements – Tropical Collections – Pre-Made Flowering Boxes – Flowering Bushes – Decorative Wreaths, Garlands & Teardrops – Branches & Twigs – Designer Accents – Succulents – Grasses & Foliage – Hanging Grasses – Hanging Foliage & Greenery – Ferns – Indoor Potted Trees, Plants & Grasses – Outdoor & Indoor Topiaries & Trees – Orchids – Floral Bouquets • **CHRISTMAS & HOLIDAY:** Huge Assortment and Styles Ornaments – Huge Quantity of Table Toppers & Accessories – Large Quantity of Wreaths – Everlasting Trees, Berry, Sprays, Picks & Fruits, Stems & Bushes, Etc. – Large Variety and Quantity of Assorted Elves • **PLUS MUCH MORE!**

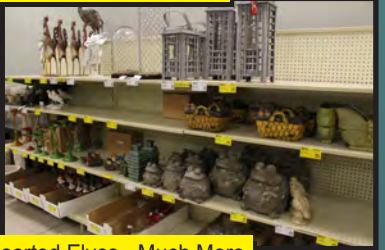
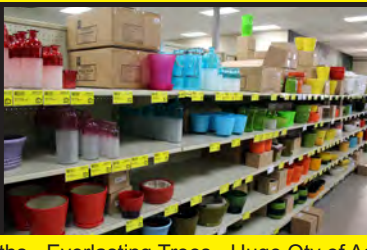
OVER \$ 1,950,000 OF INVENTORY TO BE SOLD



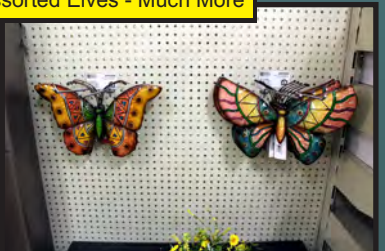
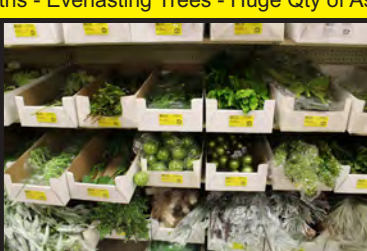
EVERLASTING BOTANICALS: Flowers - Topiaries & Trees - Plants - Wreaths - Grasses - Bouquets - Potted Plants - Branches & Twigs



HOME & GARDEN: Planters & Urns - Pedestals - Glazed Ceramic & Biodegradable Pots - Accents & Decor - Glass Vases - Baskets



CHRISTMAS: Huge Assortment of Ornaments - Table Toppers - Wreaths - Everlasting Trees - Huge Qty of Assorted Elves - Much More



• TERMS OF SALE •
Registration/Deposit: A \$1,000 refundable deposit is required to obtain a bidding number. Valid Online registration will be required for bidding. Auctioneer reserves the right to refuse a bidder's card. Everything will be sold in accordance with the Auctioneers' customary "Terms of Sale", copies of which will be posted on bidspotter.com and the auctioneers website, and will be subject to additional terms added the final day of the online sale. All items will be sold "as-is where-is", without any warranties, expressed or implied. Although obtained from sources deemed reliable, the Auctioneer makes no warranty or guarantee as to the accuracy of the information herein contained. Bidders are encouraged to thoroughly inspect the items on which they intend to bid prior to the sale. PLEASE INSPECT EQUIPMENT PRIOR TO BIDDING. View auction sale page for methods of payment. All sales are subject to Canadian Sales Tax.
SUBJECT TO ADDITIONS & DELETIONS • SALES SUBJECT TO 15% BUYERS PREMIUM